



75
grünbeck

Residential Applications | Sanitary and Heating

Supplement to our General Catalogue

grünbeck

Available
from Monday to Thursday
7:00 am - 6:00 pm
on Friday
7:00 am - 4:00 pm

International Sales
+49 9074 41-145
vertrieb@gruenbeck.de

Technical Service
+49 9074 41-333
service@gruenbeck.de

Grünbeck
Wasseraufbereitung
GmbH
Josef-Grünbeck-Str. 1
89420 Hoehstaedt
GERMANY

+49 9074 41-0

info@gruenbeck.com
www.gruenbeck.com

Grünbeck water treatment – 75 years of experience



For 75 years now, Grünbeck Wasseraufbereitung has been one of the most renowned companies for water treatment in household, trade and industry in Europe. All around the globe, our customers trust in our expertise when it comes to ideal water qualities. The company's headquarters are located in the Bavarian city of Hoehstaedt/Donau, approximately 100 km west of Munich, where all of Grünbeck's products are manufactured – high-class German workmanship with high standards of quality. We have a tight net of sales and service locations in Europe and thus not only ensure the proximity to our customers, but also have quick response times.

Grünbeck offers the entire spectrum of water treatment for drinking water installations and industrial applications. Our product range covers filtration, softening and corrosion protection up to disinfection and pure water generation. Furthermore, Grünbeck also is in the position to offer an ideal solution for the treatment of heating water.



Supplement to our General Catalogue | Residential Applications · Edition 1.0

Recommended retail prices in Euro, VAT not included. Valid as of January 1, 2024. The information in this price list supersedes all previous price information. All sales are always subject to the currently valid Standard Terms of Sale and Delivery of the country in which the respective order is placed and processed (as per order confirmation). For these Standard Terms of Sale and Delivery, go to www.gruenbeck.com. As product availability varies from country to country, please address your Grünbeck representative for respective details, if required. Descriptions and illustrations in this price list are approximate and non-binding. Photographs may show products with special features or accessories that are not included in the standard product version. Grünbeck reserves the right to modify the products and deviate from the descriptions to the extent to which such modifications are reasonable and do not change the value of the product. The regulations and directives indicated in this price list refer to either European or German standards.

Subject to modifications and errors.

Our General Terms and Conditions:

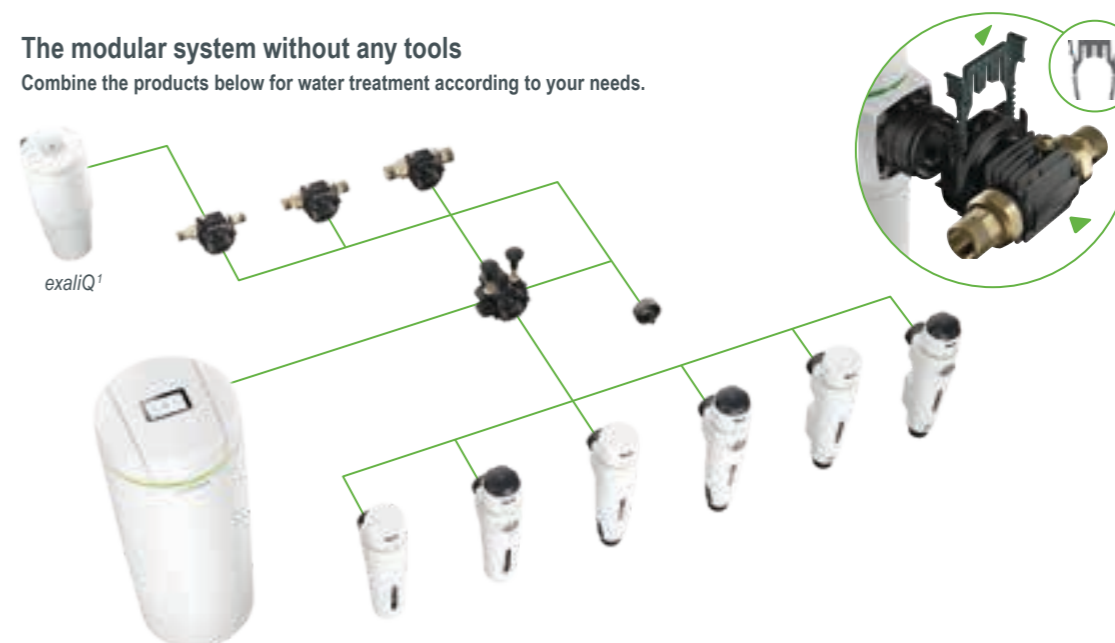


www.gruenbeck.de/en/general-terms-and-conditions



The modular system without any tools

Combine the products below for water treatment according to your needs.



cliQlock basic module 100 mm	DN 20	DN 25	DN 32			
Connection diameter	¾"	1"	1¼"			
Order no.	101000070000	101000080000	101000090000			
Cap for modular cliQlock system						
Order no.	101000100000					
Water softener	softliQ:SE18	softliQ:SE21	softliQ:SE24			
Application recommendation	1 - 4 people	1 - 9 people	1 - 12 people			
Order no.	189000020000	189000030000	189000040000			
Water filter	pureliQ:KX	pureliQ:KDX	pureliQ:RX	pureliQ:RDX	pureliQ:AX	pureliQ:ADX
	Fine filter	Fine filter with pressure reducer	Backwash filter	Backwash filter with pressure reducer	Automatic filter	Automatic filter with pressure reducer
Order no.	101000010000	101000020000	101000030000	101000040000	101000050000	101000060000

¹ For dosing system exaliQ-e, please refer to our General Catalogue for Residential Applications



cliQlock

cliQlock basic module



cliQlock

Cap for modular cliQlock system

cliQlock basic module

Space-saving basic module on 100 mm as interface between the pipe and the new modular cliQlock system

- Available in connection diameters ¾", 1" and 1¼"
- Can be combined with the pureliQ X series and/or the softliQ:SE in mere seconds thanks to the patented cliQlock bracket system
- Alternatively, the basic module can be combined with the cap for the modular cliQlock system and thus act as placeholder in the pipe
- Adaptation to the flow direction in the pipe by simply turning the cliQlock components by 360°
- Integrated in the basic module are a non-return valve, the cliQlock connection with bracket as well a connection for the exaliQ-e dosing system in combination with a softliQ:SE system
- The cliQlock components are made of high-strength plastics

Scope of supply

- cliQlock bracket
- Water meter screw connections

cliQlock basic module	DN 20	DN 25	DN 32
Connection diameter	¾"	1"	1¼"
Installation length without screw connections [mm]	100	100	100
with screw connections [mm]	185	182	191
Nominal pressure [PN]	16	16	16
Operating pressure [bar]	2 - 16	2 - 16	2 - 16
Max. water/ambient temperature [°C]	30/40	30/40	30/40
Order no.	101000070000	101000080000	101000090000

Accessories	Order no.
Cap for modular cliQlock system	101000100000

i Accessories: For adapter kits to replace an existing filter with the new cliQlock system without any work on the pipes, please refer to page 18 of our General Catalogue for Residential Applications.



cliQlock

Fine filter pureliQ:KX



cliQlock

Fine filter pureliQ:KDX

Fine filter pureliQ:KX for modular cliQlock system

For the protection of residential water installations according to DIN EN 806-2

- Installation on cliQlock basic module in mere seconds
- Adaptation to the flow direction by simply turning the cliQlock basic module by 360° – no tools required
- The integrated interval indicator reminds you in good time to replace the filter element (DIN EN 806-5)
- cliQlock components made of high-strength plastics
- Closed design to protect the filter element from UV radiation
- Inspection window to determine the filter element's degree of contamination

Scope of supply

- Including 100 µm filter element

Fine filter pureliQ:KDX for modular cliQlock system

For the protection of residential water installations according to DIN EN 806-2

- Refer to fine filter pureliQ:KX
- Outlet pressure indicator integrated in the filter head for shock protection
- Including pressure reducer as domestic water station (noise-tested group 1), continuously adjustable from 1 to 6 bar

Fine filter pureliQ:KX/KDX	20	25	32
Connection diameter in combination with cliQlock basic module [DN]	20	25	32
Flow rate pureliQ:KX, Δp = 0.2 bar [m³/h]	3.1	3.7	4.0
Δp = 0.5 bar [m³/h]	5.0	6.0	6.3
Flow rate pureliQ:KDX, as per DIN EN 1567 [m³/h]	2.3	3.6	5.8
Nominal pressure [PN]	16	16	16
Pore size as per DIN EN 13433-1 [mm]	0.1 (100 µm), can be retrofitted with pore sizes 50 µm, 20 µm and 5 µm	0.1 (100 µm), can be retrofitted with pore sizes 50 µm, 20 µm and 5 µm	0.1 (100 µm), can be retrofitted with pore sizes 50 µm, 20 µm and 5 µm
Overall height pureliQ:KX [mm]	335	335	335
Overall height pureliQ:KDX [mm]	355	355	355
Height required for replacement of filter elements [mm]	150	150	150
Order no. pureliQ:KX	101000010000		
Order no. pureliQ:KDX	101000020000		

i Accessories: For recommended replacement filter element 100 µm (order no.: 101 272e) and other sizes, please refer to page 19 and for adapter kits to page 18 of our General Catalogue for Residential Applications.



cliQlock Backwash filter pureliQ:RX

cliQlock Backwash filter pureliQ:RDX

Backwash filter pureliQ:RX for modular cliQlock system

For the protection of residential water installations according to DIN EN 806-2

- Manually operated backwash filter with cliQlock connection
- Installation on cliQlock basic module in mere seconds
- Adaptation to flow direction by simply turning the cliQlock basic module by 360° - no tools required
- The integrated interval indicator reminds you to backwash (DIN EN 806-5)
- Anti-slip grip pads at the backwash hand wheel for convenient release of backwash even in case of high water pressure
- Backwash hand wheel closes automatically
- Flexible drain connection as per DIN EN 1717 with integrated free outlet for precisely fitting installation and tightness
- The cliQlock components are made of high-strength plastics
- Closed design to protect the filter element from UV radiation
- Inspection window to determine the filter element's degree of contamination

Scope of supply

- 100 µm filter element (filter mesh made of stainless steel)
- Hose adapter for connection to the drain connection or for a clean backwash even without drain connection

Backwash filter pureliQ:RDX for modular cliQlock system

For the protection of residential water installations according to DIN EN 806-2

- Refer to backwash filter pureliQ:RX
- Outlet pressure indicator integrated in the filter head for shock protection
- Including pressure reducer as domestic water station (noise-tested group 1), continuously adjustable from 1 to 6 bar

Backwash filter pureliQ:RX/RDX			
Connection diameter in combination with cliQlock basic module [DN]	20	25	32
Flow rate pureliQ:RX, Δp = 0.2 bar [m³/h]	3.2	4.3	5.0
Δp = 0.5 bar [m³/h]	5.1	6.8	8.0
Flow rate pureliQ:RDX, as per DIN EN 1567 [m³/h]	2.3	3.6	5.8
Nominal pressure [PN]	16	16	16
Operating pressure [bar]	2 - 16	2 - 16	2 - 16
Max. water/ambient temperature [°C]	30/40	30/40	30/40
Pore size as per DIN EN 13433-1 [mm]	0.1 (100 µm)	0.1 (100 µm)	0.1 (100 µm)
Overall height pureliQ:RX [mm]	385	385	385
Overall height pureliQ:RDX [mm]	405	405	405
Order no. pureliQ:RX	101000030000		
Order no. pureliQ:RDX	101000040000		

Accessories: For drain connection DN 50 (order no. 188 875), please refer to page 41 and for adapter kits to page 18 of our General Catalogue for Residential Applications.



cliQlock Automatic filter pureliQ:AX

cliQlock Automatic filter pureliQ:ADX

Automatic filter pureliQ:AX for modular cliQlock system

For the protection of residential water installations according to DIN EN 806-2

- Automatic backwash filter with cliQlock connection
- Installation on cliQlock basic module in mere seconds
- Adaptation to the flow direction by simply turning the cliQlock basic module by 360° - no tools required
- Integrated interval indicator reminds you of maintenance (DIN EN 806-5)
- Flexible drain connection as per DIN EN 1717 with integrated free outlet for precisely fitting installation and tightness
- cliQlock components made of high-strength plastics
- Closed design to protect the filter element from UV radiation
- Inspection window to determine the filter element's degree of contamination
- Automatic backwash unit with LED display, 4 setting options (7, 30, 60 or 90 days) as well as manual backwash release
- Power supply via power supply plug, integrated protection against power failure

Scope of supply

- 100 µm filter element (filter mesh made of stainless steel)
- Power supply plug

Automatic filter pureliQ:ADX with modular cliQlock system

For the protection of residential water installations according to DIN EN 806-2

- Refer to automatic filter pureliQ:AX
- Outlet pressure indicator integrated in the filter head for shock protection
- Including pressure reducer as domestic water station (noise-tested group 1), continuously adjustable from 1 to 6 bar

Automatic filter pureliQ:AX/ADX			
Connection diameter in combination with cliQlock basic module [DN]	20	25	32
Flow rate pureliQ:AX, Δp = 0.2 bar [m³/h]	3.2	4.3	5.0
Δp = 0.5 bar [m³/h]	5.1	6.8	8.0
Flow rate pureliQ:ADX, as per DIN EN 1567 [m³/h]	2.3	3.6	5.8
Nominal pressure [PN]	16	16	16
Operating pressure [bar]	2 - 16	2 - 16	2 - 16
Max. water/ambient temperature [°C]	30/40	30/40	30/40
Pore size as per DIN EN 13433-1 [mm]	0.1 (100 µm)	0.1 (100 µm)	0.1 (100 µm)
Overall height pureliQ:AX [mm]	385	385	385
Overall height pureliQ:ADX [mm]	405	405	405
Order no. pureliQ:AX	101000050000		
Order no. pureliQ:ADX	101000060000		

Accessories: For drain connection DN 50 (order no. 188 875), please refer to page 41 and for adapter kits to page 18 of our General Catalogue for Residential Applications.



Water softener softliQ:SE

Water softener softliQ:SE

Compact single water softener including connection module suitable for cliQlock basic module

- Integrated in the connection module: overflow valve as by-pass, two shut-off valves, a mechanical blending valve and an additional cliQlock connection with cap
- Patented bracket system allows for combination with pureliQ:X series in mere seconds
- Adaptation to the flow direction by simply turning the cliQlock basic module by 360° - no tools required
- iQ mode for intelligent adjustment of system capacity and regeneration times (time slot where usually no water is needed)
- Boost mode for unplanned peaks in consumption
- Intuitive user interface and touchscreen for easy start-up and operation
- Connection with Grünbeck's myProduct app via Wi-Fi
- The salt tank can be detached thus allowing for hygienically clean maintenance
- Lid with Soft-Close function
- Disinfection unit
- Audio signal

Scope of supply

- Connection module for installation on cliQlock basic module
- Water test kit for the determination of hardness
- Flexible connection hoses for connection module, installation without mechanical stress and quick removal for maintenance purposes thanks to the cliQlock-brackets

In addition for softliQ:SE21 and softliQ:SE24

- Illuminated LED ring as a visual signal and illumination of the salt tank's interior
- Salt supply indicator for continuous monitoring and early notification
- Leak guard to warn of uncontrolled water leaks
- 2x iQ Comfort connections for easy connection of Grünbeck products (e.g. exaliQ-e)
- LAN connection, as alternative connection to the Cloud and Grünbeck's myProduct app

In addition for softliQ:SE24

- Adaptive system disinfection depending on water and room temperature for perfect hygiene with minimum use of disinfectant
- Information on water temperature
- Frost guard to warn of frost and to prevent frost damage
- Programmable output, e.g. for the connection of the delivery pump for regeneration water
- Fault signal contact (collective fault signal)
- Drain connection DN 50 including siphon



	softliQ:SE18	softliQ:SE21	softliQ:SE24
Salt supply [kg]	35	35	35
iQ mode	✓	✓	✓
Modular cliQlock system	✓	✓	✓
Mobile system control via Grünbeck's myProduct app	✓	✓	✓
Wi-Fi	✓	✓	✓
Illuminated LED ring	—	✓	✓
Salt supply indicator	—	✓	✓
Leak guard	—	✓	✓
Communication interfaces 2 x iQ Comfort	—	✓	✓
Connection for delivery pump for regeneration water	—	—	✓
Drain connection	—	—	✓
Information on water temperature	—	—	✓
Adaptive system disinfection	—	—	✓
Frost guard	—	—	✓

Water softener	softliQ:SE18			softliQ:SE21			softliQ:SE24		
	20	25	32	20	25	32	20	25	32
Connection diameter in combination with cliQlock basic module [DN]	20	25	32	20	25	32	20	25	32
Nominal flow at a pressure loss of 1 bar K_v value (DIN EN 13743) [m³/h]	1.8	1.8	1.8	2.1	2.1	2.1	2.4	2.4	2.4
at a pressure loss of 1 bar, 20 °dH (3.5 mmol/l) to 8 °dH (1.4 mmol/l) [m³/h]	2.9	3.0	3.1	3.4	3.5	3.6	3.9	4.0	4.1
Application recommendation by Grünbeck: up to ... people	1 - 4			1 - 9			1 - 12		
Nominal capacity, variable [mol]	1.1 - 2.5			1.4 - 3.6			1.6 - 4.1		
Nominal capacity, variable [°dH x m³]	6 - 14			8 - 20			9 - 23		
Nominal pressure [PN]	10			10			10		
Operating pressure [bar]	2 - 8			2 - 8			2 - 8		
Max. water/ambient temperature [°C]	30/40			30/40			30/40		
Power supply [V]	100 - 250			100 - 250			100 - 250		
[Hz]	50/60			50/60			50/60		
Dimensions (w x h x d) [mm]	360 x 815 x 430			360 x 815 x 430			360 x 815 x 430		
Salt supply [kg]	35			35			35		
Order quantity per pallet, 800 x 1,200 mm [pcs]	4			4			4		
Order no.	189000020000			189000030000			189000040000		



Water softener softliQ:LB70



Water softener softliQ:LB120



Water softener softliQ:LB

Fully automatic triple water softener working according to the ion exchange principle, for the generation of partially softened water with volume-controlled regeneration

- Particularly suited for trade and industry as well as for large apartment buildings
- 3 exchangers made of pressure-resistant plastics and filled with ion exchange material
- Distribution system with patented 3-way ball valve
- All parts coming into contact with the medium are made of brass or industrial plastics for hard, soft and regeneration water
- Control unit with intuitive colour touchscreen
- IoT-enabled and compatible with Grünbeck's myProduct app
- Continuous monitoring by web server and Modbus TCP/RTU connection
- Fault detection with signal and fault signal contacts
- 5 water meters to transmit the water flow volumes to the controller
- Electronically controlled blending valve
- Hygiene unit for automatic disinfection after the electrolysis process
- Integrated leak guard for notification in the event of water leaks
- Salt tank with light sensor to indicate the salt supply
- Salt tank featuring guides for pallet truck operation to ensure convenient transport
- Flushing connections for quick cleaning of the salt tank

Water softener softliQ:LB/LBi on pedestal

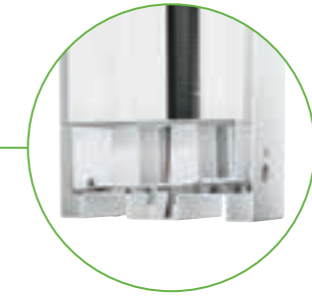
- Mounted on a pedestal and ready for connection
- Including connection kit

Water softener	softliQ:LB50	softliQ:LB70	softliQ:LB100	softliQ:LB120
Connection diameter [DN]	25	32	40	50
Nominal flow at a pressure loss of 1 bar K_v value (DIN EN 13743) [m³/h]	5.0	7.0	10.0	12.0
at a pressure loss of 1 bar, 20 °dH (3.5 mmol/l) to 8 °dH (1.4 mmol/l) [m³/h]	8.4	11.7	16.7	20.0
Continuous flow [m³/h] ¹	3.0	5.0	8.0	12.0
Pressure loss at continuous flow [bar]	0.5	0.6	0.6	1.0
Nominal pressure [PN]	10	10	10	10
Operating pressure [bar]	2 - 10	2 - 10	2 - 10	2 - 10
Max. water/ambient temperature [°C]	30/40	30/40	30/40	30/40
Power supply [V]	230	230	230	230
[Hz]	50	50	50	50
Dimensions of salt tank (w x h x d) [mm]	800 x 1,200 x 600	800 x 1,200 x 600	800 x 1,200 x 600	800 x 1,200 x 600
Salt supply [kg]	275	275	275	275
Capacity per kg of salt [mol/kg]	5.7	5.7	5.7	5.7
Salt consumption per regeneration [kg]	1.5	2.5	5.2	7.2
Order no.	185000100000	185000110000	185000120000	185000130000
Dimensions of system on pedestal without salt tank (w x h x d)	770 x 1,520 x 770	770 x 1,520 x 770	960 x 1,820 x 880	960 x 1,940 x 880
Order no. with pedestal	185000200000	185000210000	185000220000	185000230000

¹ The max. continuous flow decreases in case of a raw water hardness > 20 °dH (3.5 mmol/l).



Water softener softliQ:LB120i on pedestal



Water softener softliQ:LBi (industrial version)

Fully automatic triple water softener working according to the ion exchange principle, for the generation of fully softened water with volume-controlled regeneration

- Refer to softliQ:LB water softener
- Without blending unit to generate fully softened water < 0.1 °dH (< 0.02 mmol/l)
- 4 water meters to transmit the water flow volumes to the control unit

Water softener	softliQ:LB30i	softliQ:LB50i	softliQ:LB80i	softliQ:LB120i
Connection diameter [DN]	25	32	40	50
Continuous flow [m³/h] ¹	3.0	5.0	8.0	12.0
Pressure loss at continuous flow [bar]	0.5	0.6	0.6	1.0
Nominal pressure [PN]	10	10	10	10
Operating pressure [bar]	2 - 10	2 - 10	2 - 10	2 - 10
Max. water/ambient temperature [°C]	30/40	30/40	30/40	30/40
Power supply [V]	230	230	230	230
[Hz]	50	50	50	50
Dimensions of salt tank (w x h x d) [mm]	800 x 1,200 x 600	800 x 1,200 x 600	800 x 1,200 x 600	800 x 1,200 x 600
Salt supply [kg]	275	275	275	275
Capacity per kg of salt [mol/kg]	5.7	5.7	5.7	5.7
Salt consumption per regeneration [kg]	1.5	2.5	5.2	7.2
Order no.	185000500000	185000510000	185000520000	185000530000
Dimensions of system on pedestal without salt tank (w x h x d) [mm]	770 x 1,520 x 770	770 x 1,520 x 770	960 x 1,820 x 880	960 x 1,940 x 880
Order no. with pedestal	185000600000	185000610000	185000620000	185000630000

Accessories	Order no.
Insulation of exchanger softliQ:LB50/30i (3 pcs each)	185000900000
Insulation of exchanger softliQ:LB70/50i (3 pcs each)	185000910000
Insulation of exchanger softliQ:LB100/80i (3 pcs each)	185000920000
Insulation of exchanger softliQ:LB120/120i (3 pcs each)	185000930000
Connection kit softliQ:LB50/70, installation length 190 mm	185 807
Connection kit softliQ:LB100/120, installation length 260 mm	185 823
Connection kit softliQ:LB30i/50i, installation length 190 mm	185 808
Connection kit softliQ:LB80i/120i, installation length 260 mm	185 824
Pedestal softliQ:LB50/70/30i/50i	185 820
Pedestal softliQ:LB100/120/80i/120i	185 825
Drain connection DN 50 acc. to DIN EN 1717 including siphon	185 775

¹ The max. continuous flow decreases in case of a raw water hardness > 20 °dH (3.5 mmol/l).

→
Fold here for filling

→
Fold here for filling

© (01-10398) - 04.24 - Subject to modifications and errors.



Grünbeck Wasseraufbereitung GmbH
Josef-Grünbeck-Str. 1
89420 Hoechstädt
GERMANY

+49 9074 41-0
+49 9074 41-100

info@gruenbeck.com
www.gruenbeck.com



More information at
www.gruenbeck.com



grünbeck
Exclusive Partner

